



TONE DOWN

[Ochre Russet Sienna]

Desired level	Current level							
	7	8	9	10	11	12	13	14
	12						10Lv OX2.8%	9Lv OX2.8%
	10				10Lv OX6%	9Lv OX2.8%	8Lv OX2.8%	7Lv OX2.8%
	9			9Lv OX2.8%	9Lv OX2.8%	9Lv:8Lv (1:1) OX2.8%	8Lv:7Lv (5:1) OX2.8%	7Lv:6Lv (3:1) OX2.8%
	8		8Lv OX2.8%	8Lv OX2.8%	8Lv OX2.8%	8Lv OX2.8%	7Lv OX2.8%	6Lv OX2.8%
	7		7Lv OX2.8%	7Lv OX2.8%	7Lv OX2.8%	7Lv OX2.8%	6Lv OX2.8%	6Lv:5Lv (5:1) OX2.8%
	6	6Lv OX6%	6Lv OX2.8%	6Lv OX2.8%	6Lv OX2.8%	6Lv OX2.8%	6Lv OX2.8%	6Lv:5Lv (1:1) OX2.8%

※ The ratio shows the combination dyes.
※ 9 Sienna (10Lv : 8Lv= 1 : 1) ※ 7 Sienna (8Lv : 6Lv= 1 : 1)

[Aqua Charcoal Bayleaf Lilac Amaranth Tear Sunbeat Hazydusk Icemoss Glowrise]

Desired level	Current level								
	7	8	9	10	11	12	13	14	
	12							10Lv:10Lv [◆] (1:1) OX2.8%	10Lv:9Lv [◆] (1:1) OX2.8%
		10				10Lv OX6%	10Lv:9Lv [◆] (1:1) OX2.8%	10Lv:8Lv [◆] (1:1) OX2.8%	10Lv:7Lv [◆] (1:1) OX2.8%
	8			8Lv OX6%	8Lv OX2.8%	8Lv OX2.8%	8Lv:8Lv [◆] (1:1) OX2.8%	8Lv:7Lv [◆] (1:1) OX2.8%	8Lv:6Lv [◆] (1:1) OX2.8%
6	6Lv OX6%	6Lv OX2.8%	6Lv OX2.8%	6Lv OX2.8%	6Lv OX2.8%	6Lv:7Lv [◆] (1:1) OX2.8%	6Lv:6Lv [◆] (1:1) OX2.8%	6Lv:5Lv [◆] (1:1) OX2.8%	

* With combined with Ochre /Russet /Sienna.
※ The ratio shows the combination of dyes.

ARIMINO

PRODUCT GUIDE

Colors are magnetic

The world is filled with a myriad of colors.

Colors that are subtly, yet surely, assertive;

Colors that are bold, yet classy;

Soft colors with an air of dignified elegance.

Colors have the magnetic power to draw people in.

We can choose to color our hair any way we please,

whether for that lasting first impression

or the contrast turning of heads on the street.

The key lies in choosing beautiful colors

that give you hair an exceptionally radiant tone.

ADMIO makes that colors a reality.

Beautiful gloss and colors with less damage: Hair color with stabilized antioxidant formula^{※1}

※1 Distributes pigments to the core of the hair through effective antioxidation.

POINT 1 Less damage

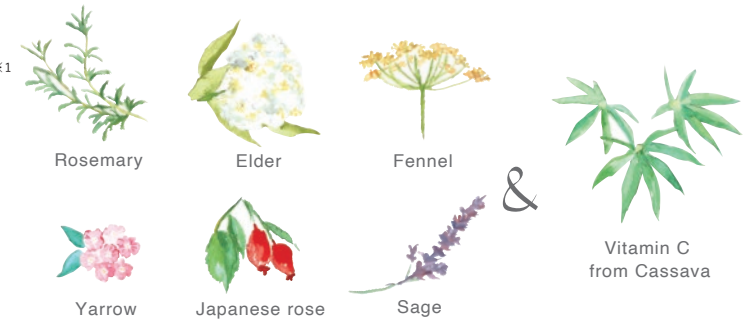
Enjoy repeated colorings

Stabilize antioxidant formula^{※1}

ADMIO colors contain 7 antioxidative botanical extracts, which stabilize oxidation during coloring, resulting in vivid colors with less damage.

※1 Distributes pigments to the core of the hair through effective antioxidation.

Antioxidative Ingredients



6 types of plant extracts

POINT 2 Color

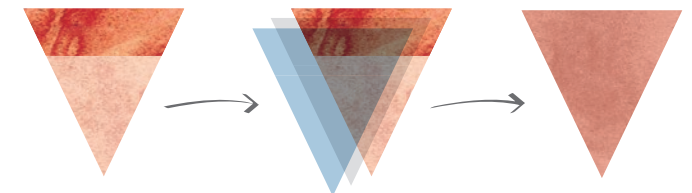
Vibrant, long-lasting colors

The foundation effect

One of the keys to a beautifully finish is to prepare a monotone base as the foundation on which to lay the color, similar to what foundation does for the face.

The result is a beautifully even color from roots to ends, with colors lasting 20% longer^{※2}.

※2 Compared to our conventional products.



The foundation effect prepares an even base to achieve the desired color.

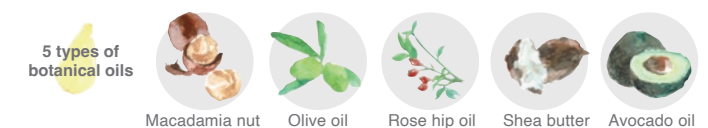
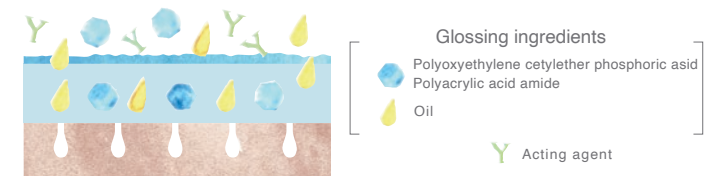
POINT 3 Shine

A beautifully brilliant, mirror-like shine

The base make-up formula

Provide 50% more shine than previous color products^{※2}. "The base make up formula" covers the surface of the hair, while glossing properties in the color, along with 5 botanial oils, are spread and adhered evenly throughout the hair, resulting in beautifully radiant, shiny hair.

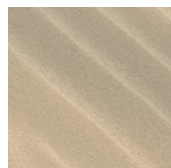
※2 Compared to our conventional products.



※Added for their moisturizing properties.

※ Images are for illustrative purposes. only.

A beautifully clear **Ochre**
for a sunny, bright and soft look



ochre

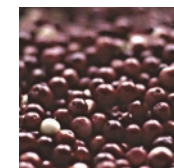
COLOR CHART:

12	
10	
9	
8	
7	
6	
5	

A deep, rich **Russet**
for a modern, sophisticated look



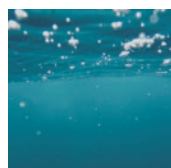
russet



COLOR CHART:

12	
10	
9	
8	
7	
6	
5	

Translucent **Aqua** for a cool finish



aqua

COLOR CHART:

12	
10	
9	10Lv:8Lv 1:1
8	
7	8Lv:6Lv 1:1
6	
5	

※ The ratio shows the combination of dyes.

Perfectly pale **Charcoal**
for a light, soft effect

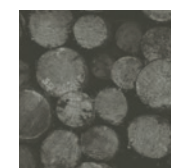


COLOR CHART:

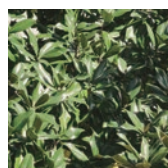
12	
10	
9	10Lv:8Lv 1:1
8	
7	8Lv:6Lv 1:1
6	
5	

※ The ratio shows the combination of dyes.

charcoal



A soft **Bayleaf** green
for the effortlessly chic look



bayleaf

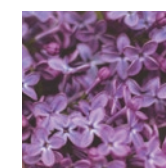
12		COLOR CHART:
10		
9	10Lv:8Lv 1:1	
8		
7	8Lv:6Lv 1:1	
6		
5		

※ The ratio shows the combination of dyes.

An elegant **Lilac**
for glossy sophistication



lilac



12		COLOR CHART:
10		
9	10Lv:8Lv 1:1	
8		
7	8Lv:6Lv 1:1	
6		
5		

※ The ratio shows the combination of dyes.

A luxurious **Amaranth**
giving bold touch to soft, silky hair



amaranth

12		COLOR CHART:
10		
9	10Lv:8Lv 1:1	
8		
7	8Lv:6Lv 1:1	
6		

※ The ratio shows the combination of dyes.

A warm brown **Sienna**
for a soft, shimmering appearance



12		COLOR CHART:
10		
9	10Lv:8Lv 1:1	
8		
7	8Lv:6Lv 1:1	
6		
5		

※ The ratio shows the combination of dyes.

sienna



A whitish color **Tear** for a vibrant sense of luminosity



12		COLOR CHART:
10		
9	10Lv:8Lv 1:1	
8		
7	8Lv:6Lv 1:1	
6		
5		

※ The ratio shows the combination of dyes.

A sophisticated **Sunbeat**
for a bright, energetic impression

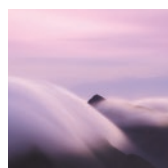


12		COLOR CHART:
10		
9	10Lv:8Lv 1:1	
8		
7	8Lv:6Lv 1:1	
6		
5		

※ The ratio shows the combination of dyes.



A foggy color **Hazydusk**
for a sophisticated translucent look



hazydusk

12		COLOR CHART:
10		
9	10Lv:8Lv 1:1	
8		
7	8Lv:6Lv 1:1	
6		
5		

※ The ratio shows the combination of dyes.

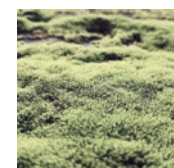
A gentle **Icemoss**
giving a harmonized sleek finish



12		COLOR CHART:
10		
9	10Lv:8Lv 1:1	
8		
7	8Lv:6Lv 1:1	
6		
5		

※ The ratio shows the combination of dyes.

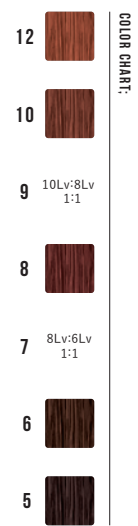
icemoss



A radiant **Glowrise** for a fresh and energetic impression



glowrise



※ The ratio shows the combination of dyes.

LINE UP



13 colors 68 shades/LT/CL
[Oxidative hair color·hair lightener]
90g each
LT = Lightener/CL = Clear



Developer
1000g each
OX 6%
OX 2.8%



Utilization of environmental-friendly containers

Tube:54% lower cap weight compared to conventional products.
Box:Actively utilize environmental-friendly papers.
Pouch:Utilization of pouches to lead to resource conservation and reducing wastes.

Shampoo and Treatment for intensive 3 days color care

- ✓ Replenishes skin and hair with moisture
- ✓ Provides extra shine to finished hair
- ✓ Color last longer
- ✓ Cares for damages due to hair coloring



Color care shampoo
680mL



Color care treatment
680g



Color care shampoo 40mL
Color care treatment 40g



3DAYS
COLOR CARE

COLOR CHART

	Ochre	Russet	Aqua	Charcoal	Bayleaf	Lilac	Amaranth	Sienna
12								
10								
9								
8								
7								
6								
5								

Express more transparency and more softness
Sheer line

Tear	Sunbeat	Hazydusk	Icemoss	Glowrise

14 Lightener	Clear

※ Mixing ratio for 12Lv or above is 1 : 2 <Color cream : OX(OX6%)>
※ Color samples are on gray hair.
Printed color may deffer slightly from actual results.

INFORMATION

Instructions for use

■ Basic mixing ratio	[12Lv or above] Color cream: OX(6%)=1 : 2 [10Lv or below] Color cream: OX (6%)=1 : 1
■ Reference amount for color cream	Regrowth 40~50g (for 2cm roots) Previous colored parts Short ~30g / Medium 30g~50g / Long 50g~ ※ May vary slightly depending on hair length, quality, and volume.
■ Estimated processing time	Standard single process hair color : Apply to the regrowth, then apply to the previous colored parts, leave in for 20 minutes. 12Lv or higher previous colored parts or damaged parts : Leave in for 10 minutes or longer at least.
■ How to use OX in different situations	6% If you wish to brighten hair than its current color, if you wish a vivid finish. 2.8% If you wish to darken hair than its current color, if you wish to firmly set in new color in previous colored parts.

- Before using Color Story ADMIO...
 - ※ Thoroughly read instruction manual before using products.
 - ※ Perform an allergy patch test every time you use the products.
 - ※ Never use on anyone who has had an allergic reaction to color products in the past.
 - ※ Always wear gloves when handling products, such as during application and when rinsing.
- Performing a strand test to test color
 - Take 2-3 strands of hair at the back of head, underneath the surface, where the overall design will not be affected.
 - Apply color within a piece of foil, and leave for 15 minutes. Wipe and check color, and use results to determine formula.