



ARIMINO BLEACH GUIDE BOOK

BLEACH 120 | BLEACH OX 6% | BLEACH OX 1%



**ARIMINO
SKIN CLEANSING**
Soap-type color remover
200mL



**ARIMINO
SCALP OIL**
Scalp oil
150mL



**ARIMINO
SKIN PROTECT CREAM**
Skin protect cream
90g



**ARIMINO
TINT ESCAPE**
Hair dye remover
150g

Precautions for use ARIMINO BLEACH 120

Thoroughly read instructions before using products.

- Do not use if you have previously experienced a reaction to products contain persulfate.
- This product contains persulfate, it can cause an allergic reaction.
- Mixing ratio of bleach powder and developer is 1 : 2. If the mixing ratio is changed, the viscosity changes and bleaching power decreases.
- Apply bleach immediately after mixing. Bleaching power weakens as time goes by.

※Hair strand test

Depending on the types of hair color used last time, the desired brightness may not be achieved. Check hair condition and color history before bleaching all of the hair.

Take small bundles from the inside of the back of the head(in 2-3 places) so as not to disrupt the hair design. Apply bleach and seal in foil, let stand for 15 minutes and check results.

OFFICIAL HP
COLOR WORK SUPPORT TOOL



Instagram
ARIMINO professional account



Instagram
ARIMINO INTERNATIONAL account



ARIMINO

ARIMINO BLEACH LINEUP

With the growing need for more hair color variations,
hair salons are required to have a wider range of expression in hair color designs.

ARIMINO BLEACH 120 offers a speedy, high-performing bleaching capability.
However, some people are concerned with processing time control and hair damage
depending on the salon situation and hair condition.
The ability to utilize a detailed application is also essential when touching up the roots.

ARIMINO BLEACH OX is carefully made with **ARIMINO BLEACH 120**'s processing time,
usability and hair damage mitigation taken into account.
ARIMINO BLEACH provides support for precise, expressive salon color designs.



PRODUCT

The powder bleach offers a high-performing bleaching capability with a creamy texture for an easy, even application.



ARIMINO BLEACH 120

500g
Hair bleaching agent • Hair dye remover / Persulfate
<Mix ratio> Bleach powder : OX = 1 : 2

**High-performing bleaching capability
that brightens virgin hair as desired.**

Unique balance of Potassium persulfate×Ammonium persulfate. A solid bleaching ability that achieves high tones. Controls the bleaching power with developers to expand the range of brightness.



Superfine powder, easy application.

The powder blends well without forming lumps or becoming airborne. Blends evenly with the developers to impart an even, stable bleaching capability.



ARIMINO BLEACH OX can be used in a variety of situations from high-tone bleach to hair dye removal.



Controls the capabilities of the root touch-up bleach and hair dye removal. (Developer for bleach)

NEW ARIMINO BLEACH OX 6%
Developer / Hydrogen peroxide solution
1200g



Keeps the capabilities of bleaching and hair dye removal to a bare minimum. (Developer for bleach)

NEW ARIMINO BLEACH OX 1%
Developer / Hydrogen peroxide solution
1200g

Create a uniform base with ARIMINO BLEACH 120 × OX6% • 1%



Bleaching power
2 types of OX cover various hair color histories.



Operability
Creams in pursuit of high-quality bleach work.

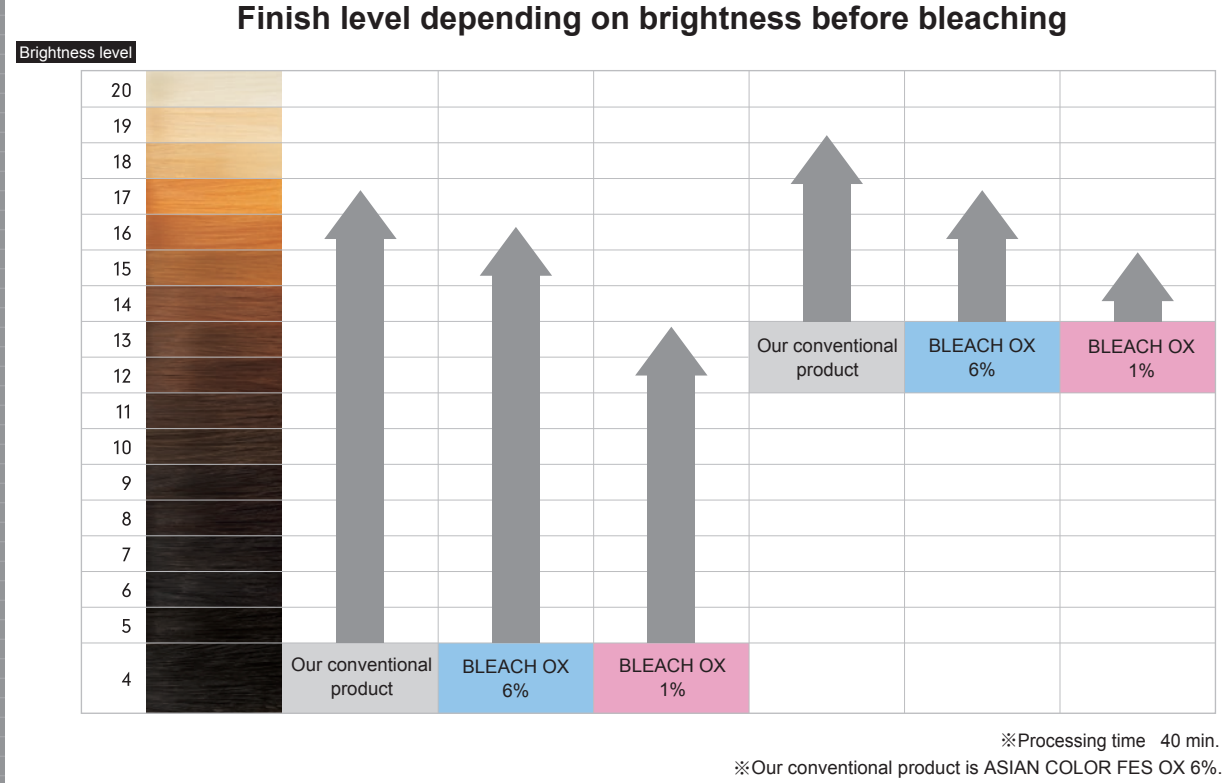
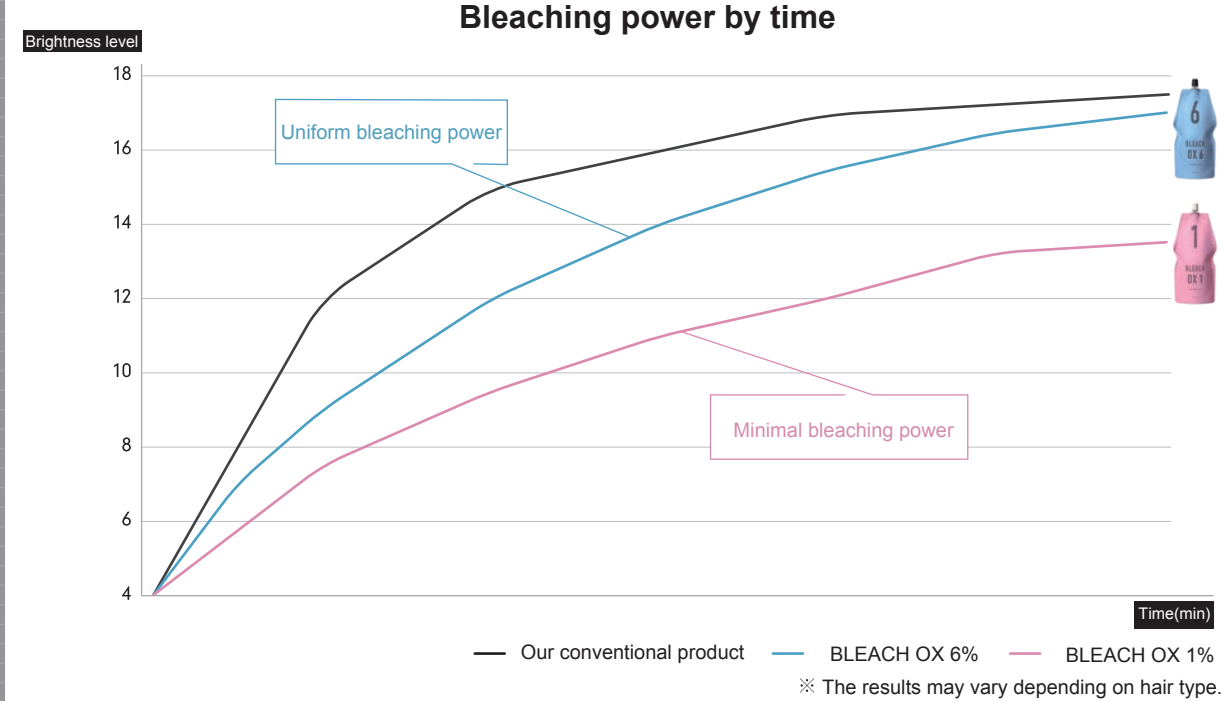


Damage care
Induce optimum reaction and reduce friction during application.

BLEACH DATA

Point
01

Bleaching power



Selection of developer (OX) depending on the residual dye



Hair dye removing capability by tone



Formulation	Processing time
[BLEACH 120] : [BLEACH OX (6% / 1%)]	10 - 40 minutes
1 : 2	(at room temperature)

BLEACH DATA

Point 02 Operability

Viscosity designed for usage situations



6% The bleach stays on the regrowth hair, which is perfect for touching up the roots. Comfortable combing during application.

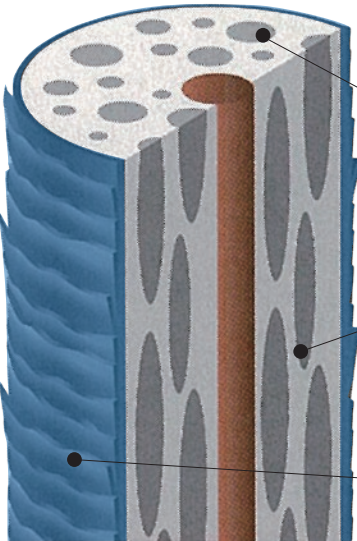


1% Blends well with colored part, which is perfect for speedy application.

Creams perfect for bleach work in which 3 different oils are blended at an optimum ratio



Point 03 Damage care



Care for hair damage tailored to the mechanism

- Control excessive alkali (Alkali moderation)**
Buffer excessive alkali by acid to control the overreaction which occurs immediately after applying bleach formula, making it possible to process the hair by leaving it for a long time.
- Control overreaction caused by metal in hair (Chelate function)**
Control over-oxidation caused by metal in the hair, addressing heating, swelling, and liquefaction.
- Coat the hair's surface to reduce friction during application**
The polymer covers hair's surfaces to reduce tangling and friction.

Hair protection ingredient : Amino acid plex(L-glutamic acid)
A type of acidic amino acid in hair which fills gaps inside of the hair.

BASIC PROCESS

STEP 1.	Consultation	STEP 7.	Let stand (at room temperature)
STEP 2.	Choose bleach product	STEP 8.	Check color
STEP 3.	Hair & Scalp protection (Scalp : Scalp oil Hair : Pre-treatment)	STEP 9.	Wash off
STEP 4.	Section hair	STEP 10.	Shampoo
STEP 5.	Formulation	STEP 11.	Hair treatment
STEP 6.	Application		Blow-dry / Tone hair

POINT & FAQ

Keys to make an even bleach base

<p>Mix ratio <Bleach powder : developer></p> <p>Q. What would happen if I change the mix ratio? (e.g. 1:1, 1:3)</p> <p>A. When the mix ratio is changed, the desired brightness may be insufficiently achieved and hair may become damaged. We recommend that the mix ratio should be used at 1:2.</p>	<p>Processing time</p> <p>Q. Is it possible to brighten the hair even more by adding heat?</p> <p>A. Ensure you use the product at room temperature. Adding heat to the bleach may cause excessive damage, breakage, and scalp problems. ※ Applying heat is non-approved.</p>
<p>Sectioning</p> <p>Q. What hair sectioning is recommended when touching up the customer's hair by 1 person?</p> <p>A. We recommend dividing the hair into 4 sections: front, back, left and right. If the top on the head is brighter and damaged than the rest, applying in 5 sections is also recommended.</p>	<p>Color check</p> <p>Q. What is the recommended way to check color?</p> <p>A. Color cannot be accurately assessed while the bleach is on the hair. Gently remove the bleach using a cotton pad before checking the color.</p>
<p>Strand test</p> <p>Q. How to do the strand test before bleaching or removing hair dye?</p> <p>A. In advance of bleaching all of the hair, apply the bleach on 2 or 3 areas and leave for approximately 15 minutes before removing then. Check the presence/absence and its degree of residual dye and use it to decide on the bleaching process and the product to use.</p>	<p>Shampoo</p> <p>Q. Which do you recommend shampooing once or twice?</p> <p>A. We recommend shampooing twice. A thorough shampooing and rinsing afterwards will reduce stress on the hair.</p>

CASE STUDY-1 Bleach

CASE. 1

Brighten virgin hair

Continuous application

Let stand for 30 - 40 min

① Apply to the entire hair 2cm away from the roots.
BLEACH 120 : BLEACH OX 6%
(or OX 1%)
= 1 : 2

② 2cm roots
BLEACH 120 : BLEACH OX 6%
(or OX 1%)
= 1 : 2

Check color
Wash out when the desired brightness is achieved.

Finish or Tone hair

CASE. 2

Short root touch-up (~2cm)

Let stand for 30 - 40 min

① Regrowth
BLEACH 120 : BLEACH OX 6%
(or OX 1%)
= 1 : 2

Check color
Wash out when the desired brightness is achieved.

Finish or Tone hair

Indication of bleach selection

Weak←Bleaching power→Strong

(Processing time : 40 min)

Lv	13	14~15	16
Product & mix ratio	BLEACH 120 : BLEACH OX 1% 1 : 2	BLEACH 120 : BLEACH OX 6% (or OX1%) 1 : 2	BLEACH 120 : BLEACH OX 6% 1 : 2
Finish brightness			

If you desire 17 level or higher, bleach again after checking the hair condition.

CASE STUDY-2 Hair dye removal

CASE. 1

Regrowth(bleach) & Previously colored hair(hair dye removal)

Let stand for 10 min

Let stand for 10 - 30 min

① Regrowth
BLEACH 120 : BLEACH OX 6%
(or OX 1%)
= 1 : 2

② Previous colored part
BLEACH 120 : BLEACH OX 1%
(or OX 6%)
= 1 : 2

Check color
Wash out when the desired brightness is achieved.

Finish or Tone hair

Bleach

Hair dye removal

CASE. 2

Regrowth(bleach) & Previously colored hair(Bleach • hair dye removal)

Let stand for 10 min

Let stand for 10 - 30 min

① Regrowth
BLEACH 120 : BLEACH OX 6%
(or OX 1%)
= 1 : 2

② Previous colored part
BLEACH 120 : BLEACH OX 6%
(or OX 1%)
= 1 : 2

Check color
Wash out when the desired brightness is achieved.

Finish or Tone hair

Bleach

Bleach

Hair dye removal

Indication of hair dye remover selection

Weak←Dye-removing power→Strong

Lv	Cool color		Warm color
Product & mix ratio	BLEACH 120 : BLEACH OX 1% 1 : 2	BLEACH 120 : BLEACH OX 6% (or OX1%) 1 : 2	BLEACH 120 : BLEACH OX 6% 1 : 2
Target color			

When removing hair dye, conduct a hair strand test to check presence/absence of residual dye, and proceed with the process while checking the hair condition.