



**ARIMINO BLEACH OX** can be used in variety of situations  
from high-tone bleach to hair dye removal.



Controls the capabilities of the root touch-up bleach  
and hair dye removal. (Developer for bleach)

**NEW ARIMINO BLEACH OX 6%**

Developer / Hydrogen peroxide solution

1200g

Main ingredients

- Amino acid plex<sup>®</sup> (Hair protection)
- Liquid paraffin (Emolient)
- Isopropyl myristic (Emolient)
- 2-Ethylhexyl palmitate (Emolient)



Keeps the capabilities of bleaching and hair dye  
removal to a bare minimum. (Developer for bleach)

**NEW ARIMINO BLEACH OX 1%**

Developer / Hydrogen peroxide solution

1200g

Main ingredients

- Amino acid plex<sup>®</sup> (Hair protection)
- Liquid paraffin (Emolient)
- Isopropyl myristic (Emolient)
- 2-Ethylhexyl palmitate (Emolient)

※ L-glutamic acid

**HOW TO USE**

**Formulation**

[BLEACH 120] : [BLEACH OX (6% / 1%)]  
1 : 2

**Processing time**

10 - 40 minutes  
(at room temperature)

**PROCESS**

STEP 1.	Consultation	STEP 7.	Let stand (at room temperature)
STEP 2.	Choose bleach product	STEP 8.	Check color
STEP 3.	Hair & Scalp protection ( Scalp : Scalp oil Hair : Pre-treatment )	STEP 9.	Wash off
STEP 4.	Section hair	STEP 10.	Shampoo
STEP 5.	Formulation	STEP 11.	Hair treatment
STEP 6.	Application		Blow-dry / Tone hair

**Create a uniform base with ARIMINO BLEACH 120 × OX 6% · 1%**

Point  
01

**Bleaching power**

2 types of OX cover  
various hair color histories.

Point  
02

**Operability**

Creams in pursuit of  
high-quality bleach work.

Point  
03

**Damage care**

Induce optimum reaction and  
reduce friction during application.

More product information →



The powder bleach offers a high-performing bleaching capability with a creamy texture for an easy, even application.



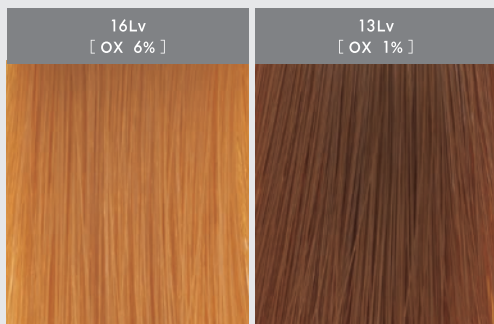
## ARIMINO BLEACH 120

Hair bleaching agent • Hair dye removal / Persulfate

500g

### High-performing bleaching capability that brightens virgin hair as desired.

Unique balance of Potassium persulfate x Ammonium persulfate. A solid bleaching ability that achieves high tones. Controls the bleaching power with developers to expand the range of brightness.



### Superfine powder, easy application.

The powder blends well without forming lumps or becoming airborne. Blends evenly with the developers to impart an even, stable bleaching capability.



### Precautions for use

Thoroughly read instructions before using products.

- Do not use if you have previously experienced a reaction to products contain persulfate.
- This product contains persulfate, it can cause an allergic reaction.
- Mixing ratio of bleach powder and developer is 1 : 2. If the mixing ratio is changed, the viscosity changes and bleaching power decreases.
- Apply bleach immediately after mixing. Bleaching power weakens as time goes by.

### ※Hair strand test

Depending on the types of hair color used last time, the desired brightness may not be achieved. Check hair condition and color history before bleaching all of hair.

Take small bundles from the inside of the back of the head (in 2-3 places) so as not to disrupt the hair design. Apply bleach and seal in foil, let stand 15 minutes and check results.

**ARIMINO**