

S P R I N A G E

ARIMINO

ARIMINO CO., Ltd.

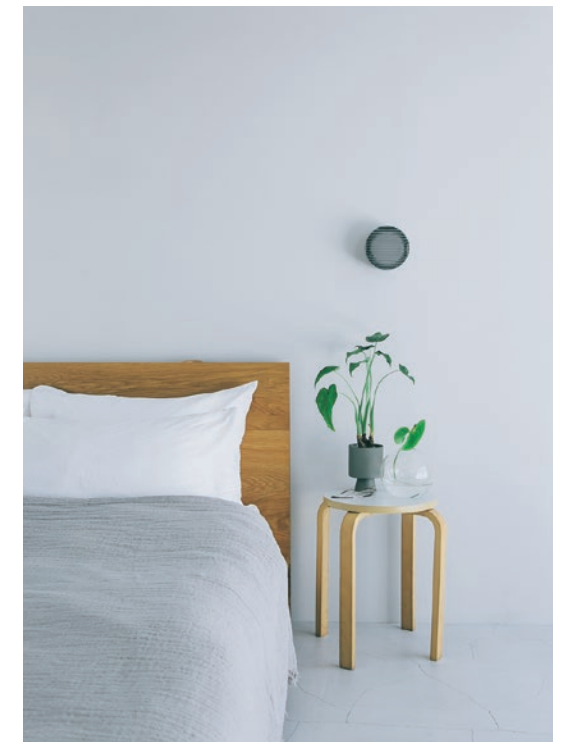
1-5-22 Shimo-Ochiai Shinjuku-ku Tokyo Japan 161-0013

Simple luxury care for satisfying your skin, hair, and mind

What is good for the skin is also good for the hair.

SPRINAGE is a skin care-inspired product that is rich in naturally derived “Skin and hair ingredients”.

Take a moment from your busy daily life to deeply relax and satisfy your skin, hair, and mind with simple care.



The new and evolved “SPRINAGE”

A new series of products with particular attention to skin and hair ingredients has been added to the original SPRINAGE product line.

“MOIST VEIL” has been added to the original line to provide a smooth finish while protecting sensitive scalp after hair coloring or during the changing of seasons.

“PUFF SMOOTH” and “GENTLE MOIST” have also been well received by many customers.

New beauty ingredients have been added while preserving the comfortable feeling of use, to provide an even richer moisturizing experience.

The lineup approaches various concerns and leads to beautiful skin and hair with more time for comfortable care.





We have responded to various scalp and hair concerns to take your beauty to the next level



“Skin and hair ingredients” that care for the scalp and further enhance the beauty of hair based on the concept of skin care

A luxurious blend of carefully selected beauty ingredients used in cosmetics. The texture, which enables you to feel the color of the ingredients itself, is proof that the carefully selected, naturally derived ingredients have been generously blended into the product. The skin care-inspired beauty ingredients penetrate directly to the stratum corneum, adjust the moisture balance of the scalp, and moisturize the hair to its core.

Main ingredients

-  Astaxanthin (Moisturizing /Haematococcus pluvialis oil)
Naturally derived “Astaxanthin” is characterized by the red color of the ingredient itself and supports the scalp and hair care with the power of nature.
-  Lithospermum root (Skin protection /Lithospermum officinale root extract)
“Lithospermum root” has been used for skin care since ancient times, and its beautiful pink texture is the color of the ingredient itself. This ingredient supports the skin’s barrier function while regulating the moisture balance.

An “original formula” that approaches various scalp and hair concerns

The “Moisture shrink formula” thoroughly removes dirt while retaining the essential beauty ingredients and filling the skin with moisture, and the “Moisture barrier formula” maintains moisture while removing residues that can easily cause irritation. We have adopted an original formula that brings out the beauty of your hair while caring for a variety of concerns.



We are committed to not using unneeded additives

- Mineral oil-free*1
- Synthetic coloring-free
- Paraben-free
- Silicone-free*2

Subjected to allergy testing*3
Patch tested for sensitive skin*4
※This does not mean that allergies will not occur in all people.

MOIST VEIL



Leads to beautiful, smooth hair

Hypoallergenic formula care to keep your scalp healthy

MOIST VEIL containing the beauty ingredient "Lithospermum root* ".

It supports the barrier function while filling the skin with moisture and caring for skin that is prone to imbalance.

The luxurious blend of beauty ingredients derived from skin care concepts allows moisture to rapidly penetrate to the core of the hair, even though it is a hypoallergenic formula. Gives your hair a smooth, silky feel when running your fingers through it.



Main ingredient



Lithospermum root (Skin protection /Lithospermum officinale root extract)

"Lithospermum root" has been used for skin care since ancient times, and its beautiful pink texture is the color of the ingredient itself. This ingredient supports the skin's barrier function while regulating the moisture balance.

MOIST VEIL Shampoo and Treatment



SHAMPOO MOIST VEIL

280mL / 680mL / 1000mL

This product contains “Lithospermum root*1”, which supports the skin’s barrier function, and the original “Moisture barrier formula” removes residues the can easily cause irritation, while maintaining the necessary moisture to keep sensitive and unstable scalps healthy and conditioned.



Features of fragrance
Jasmine and peony based fragrance

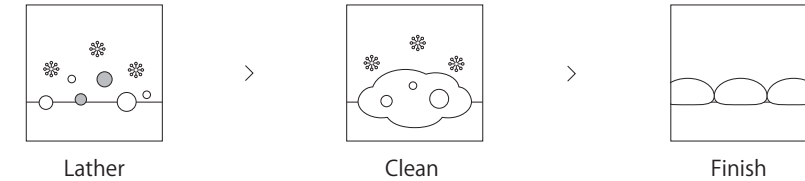
The elegant and mellow scent of jasmine and the refined sweetness of peony form the core of the rich fragrance.



Moisture barrier formula

Remove dirt and fill with moisture
Eliminate the cause of irritation by “Selective cleansing”

ARIMINO’s original moisture barrier formula removes unnecessary substances that irritate the scalp and provides moisturizing by retaining beauty ingredients. “Selective cleansing” is realized by removing dirt and residual active agents that tend to irritate the scalp, while retaining beauty ingredients and plant oils. It keeps your scalp well-conditioned and your hair moisturized.



Lather
When shampooing, there are 2 types of ingredients in the foam, a “Conditioning ingredient” that conditions the touch of the hair and a “Beauty ingredient” that moisturizes the scalp and hair.

Clean
When rinsing, “Conditioning ingredients” and “Beauty ingredients” form a “Complex”. Dirt and residue are washed away while the complex remains on the scalp and hair.

Finish
After rinsing, the beauty ingredients stay on the scalp and hair to retain moisture and keep your scalp replenished.

TREATMENT MOIST VEIL

230 g / 680 g / 1000 g

“Lithospermum root*2”, which adheres closely to damaged areas, helps maintain the hair’s moisture balance. It moisturizes the hair from the outside and the inside, and helps to treat damage. By delivering moisture to the core of the hair, it gives your hair a beautiful luster and a smooth texture.



Features of fragrance
Jasmine and peony based fragrance

The elegant and mellow scent of jasmine and the refined sweetness of peony form the core of the rich fragrance.



MOIST VEIL MIST

120mL

This skin care-inspired mist containing "Lithospermum root*" helps to deal with sensitive and unstable skin, as well as scalp and hair troubles, and is recommended for scalp and hair care after hair coloring. It also treats seasonal troubles such as dryness of hair due to external stimuli, UV rays, dryness of the scalp, air conditioning, etc. Spraying it on the go is easy, and every time you use it, you will feel the healthy condition of your scalp and beautiful, moisturized hair.

Features of fragrance

Jasmine and sage based fragrance

The elegant and mellow jasmine and the clean and fresh sage fragrance form the core of the exquisite and refined scent.



MOIST VEIL BALM

25 g

This balm is a smooth, hypoallergenic formula containing "Lithospermum root*" that is soft and easy to spread across your hair and body. The balm is smooth enough to scoop with balls of your fingers, and lets you easily style your hair by running your fingers through your hair to create a wet look. While styling, it also takes care of damage caused by hair coloring and dryness. We also recommend that you spread the remaining balm on your hands to care for your hands and fingers.

Features of fragrance

Jasmine and peppermint based fragrance

The elegant and mellow jasmine and the clean peppermint are the core of this refreshing and invigorating fragrance.



For these concerns

- ☐ Sensitive scalp
- ☐ Sensitive and unstable skin during seasonal changes
- ☐ Dry scalp
- ☐ Poor scalp condition
- ☐ Dry hair
- ☐ I want to freshen up on the go

For these concerns

- ☐ Dry hair
- ☐ Dry and frizzy hair ends
- ☐ Sensitive and unstable skin during seasonal changes
- ☐ I want to keep my hands and fingers moisturized
- ☐ I want a trendy wet hair style
- ☐ My hair gets stiff after dyeing it and is hard to style

HOW TO USE

for SCALP & HAIR

- 1 After shampooing, gently wipe away water from the scalp with a towel.
- 2 Apply evenly to the scalp while parting near the roots of the hair. Around 10 pumps is recommended.
- 3 Apply gently to the scalp with balls of your fingers.

※It can be used on dry scalp and hair.
 ※It can also be used on the body.
 ※If it comes in contact with clothing, etc., wipe it off immediately.

Recommended amount
 1 part 1 pump × 8 ~ 10 parts (Whole head : 8 ~ 10 pumps)

for SKIN & BODY

- 1 After washing your face, dispense an appropriate amount into the palms and apply it to your face, or spray a mist about 15 cm away from your face.
- 2 Apply a layer of mist to areas that are particularly dry.
- 3 Gently wrap both hands around the skin and apply evenly.

※Please keep your eyes and mouth closed while using this product.

HOW TO USE

for HAIR

- 1 Spread an appropriate amount of the product in the palms until it forms an oil-like consistency, and then apply to dry hair.
- 2 Apply by running your fingers through your hair starting from the hair ends and layering on areas that are particularly dry.
- 3 Spread the remaining balm on the hands directly to the fingertips and back of the hands to take care of them.

Recommended amount (Medium length)
 • Natural textured finish : Size of a pearl (1.5 g)
 • A textured finish with a firm piecey and wet look : Size of 2 pearls (3 g)

for BODY

- 1 Spread an appropriate amount of the product in the palms until it forms an oil-like consistency, and then apply to the skin.
- 2 Apply in layers to areas that are particularly dry.
- 3 Finally, wrap the skin with the palms to spread it around.

SPA SOOTHING OIL • SERUM SPA OIL



Skin and Hair Oil

SPA SOOTHING OIL

40mL

A multi-purpose beauty oil that protects skin and hair from damage in the spring and summer when UV rays are more intense. Carefully selected beauty ingredients including concentrated “Astaxanthin” and plant oils treat rough skin and imbalanced scalp, while keeping your hair moisturized. It is light and comfortable to use, and can be applied all over the body.



Reduces the appearance of fine wrinkles caused by dryness (Efficacy evaluated and tested)

Features of fragrance

Orange peel and eucalyptus are at the core of the aroma of the essential oil itself

Fruity orange peel and refreshing eucalyptus are blended with lime oil and lemongrass oil to create a clean and fresh fragrance derived from essential oils.



Main ingredients



Astaxanthin (Moisturizing /Haematococcus pluvialis oil)

Naturally derived “Astaxanthin” is characterized by the red color of the ingredient itself and supports the scalp and hair care with the power of nature.

SERUM SPA OIL

40mL

A multi-purpose beauty oil keeps skin and hair well moisturized even in the fall and winter when dryness accelerates. Luxurious blend of carefully selected beauty ingredients and plant oils, including concentrated “Astaxanthin” to envelop the skin, scalp and hair in a rich moisture. Although rich in concentrated beauty ingredients, it spreads easily and does not feel sticky, allowing for quick and easy care anytime, anywhere.



Reduces the appearance of fine wrinkles caused by dryness (Efficacy evaluated and tested)

Features of fragrance

Bergamot and lavender are at the core of the aroma of the essential oil itself

The floral scent of bergamot and gentle lavender are blended with anthesis nobilis flower oil, rosemary oil, and other oils. It has a soft and refreshing.



Main ingredients



Astaxanthin (Moisturizing /Haematococcus pluvialis oil)

Naturally derived “Astaxanthin” is characterized by the red color of the ingredient itself and supports the scalp and hair care with the power of nature.

HOW TO SELECT



SPA SOOTHING OIL

- ☐ Skin feels rough and dry
- ☐ I want to prevent makeup from coming off during the day
- ☐ Stickiness due to dryness in spring and summer
- ☐ Skin and hair tend to dry out in the sun
- ☐ I want my hair to have luster and bounce



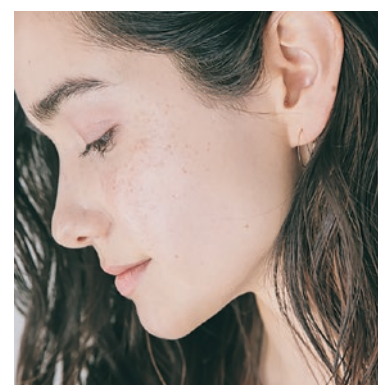
SERUM SPA OIL

- ☐ I am prone to dryness even after skin care
- ☐ My skin is dry and poor makeup to stay on
- ☐ I get dry in the fall and winter with my usual skin care regimen
- ☐ Dry hair
- ☐ I want to smooth hair



HOW TO USE

for SKIN & BODY & SCALP

As a pre-facial lotion booster*¹

After washing your face, apply a thin layer of oil to your whole face. Soften and loosen up the skin to improve the absorption*² of the facial lotion.

As an addition to your daily skin & body care items

Apply 1-3 drops for facial lotion, body cream, etc. Usage with liquid foundation is also recommended.

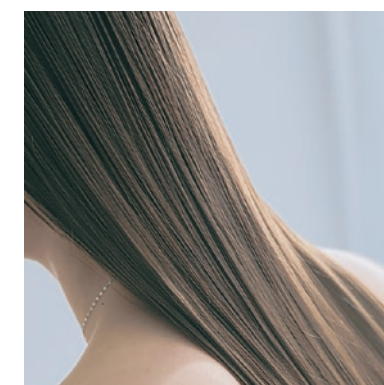
At the end of moisturizing care

As a finisher to skin and body care, apply the oil to the entire skin. With the surface of the skin wrapped in the oil, moisture will be tightly locked in.

For scalp massage

Before shampooing, apply the oil to the scalp and massage to relax the side of the head. Shampoo after the massage.

for HAIR



As a hair oil to protect hair

Apply 2-3 drops to wet hair after towel-dried hair or dry hair. The oil coats each strand of hair to protect it from drying out.

As an intensive hair treatment

Mix 2-3 drops of oil in with the hair treatment*³ you use every day, and apply to the hair ends mainly. Brings a soft texture to damaged hair.

PUFF SMOOTH・GENTLE MOIST



Aging care*¹ that provides rich moisture to the scalp and hair

These products contain "Astaxanthin*²" a naturally derived beauty ingredient that is also used in cosmetics.
 Luxurious care by washing the scalp and hair with beauty essence leads to an ideal finish.
 The "PUFF SMOOTH" provides fluffiness from the roots of the hair for those concerned about loss of bounce and elasticity,
 and the "GENTLE MOIST" makes hair that is stiff and prone to spreading smooth and easy to manage,
 achieving an ideal finish that is rich in moisture.



Main ingredient



Astaxanthin (Moisturizing / Haematococcus pluvialis oil)

Naturally derived "Astaxanthin" is characterized by the red color of the ingredient itself and supports the scalp and hair care with the power of nature.

PUFF SMOOTH

Shampoo and Treatment



SHAMPOO • TREATMENT PUFF SMOOTH

280mL / 680mL / 1000mL • 230 g / 680 g / 1000 g

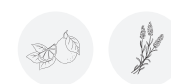
For soft, silky, bouncy hair at the roots

In addition to "Astaxanthin*1" and other beauty ingredients, it contains "Macadamia nut oil*2" and other plant oils. Replenishes moisture while giving hair bounce and elasticity for soft, fluffy, shiny hair.

Features of fragrance

Bergamot and lavender based fragrance

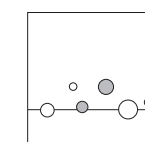
A blend centered around floral-inspired bergamot and gentle lavender aromas to provide a soft and refreshing fragrance.



Moisture shrink formula

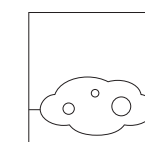
Cleans dirt, retains necessary beauty ingredients, and moisturizes hair.

ARIMINO's original moisture shrink formula retains beauty ingredients such as "Astaxanthin*1" and plant oils, while removing unnecessary dirt. Beauty ingredients stay in place and retain moisture while leaving the scalp and hair refreshed and conditioned.



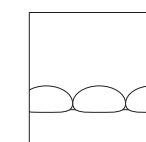
Lather

When shampooing, there are 2 types of ingredients in the foam, a "Conditioning ingredient" that conditions the touch of the hair and a "Beauty ingredient" that moisturizes the scalp and hair.



Clean

When rinsing, "Conditioning ingredients" and "Beauty ingredients" form a "Complex". Dirt is washed away while the complex remains on the scalp and hair.



Finish

After rinsing, the beauty ingredients stay on the scalp and hair to retain moisture. Beauty ingredients stay inside the hair, not just on the surface, to keep it moisturized.

GENTLE MOIST

Shampoo and Treatment



SHAMPOO • TREATMENT GENTLE MOIST

280mL / 680mL / 1000mL • 230 g / 680 g / 1000 g

For shiny and manageable hair that is soft all the way to the hair ends

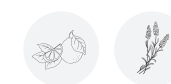
In addition to "Astaxanthin*1" and other beauty ingredients, it also contains "Organic shea butter*2" and other ingredients. Adding moisture give hair luster and a smoother texture.



Features of fragrance

Bergamot and lavender based fragrance

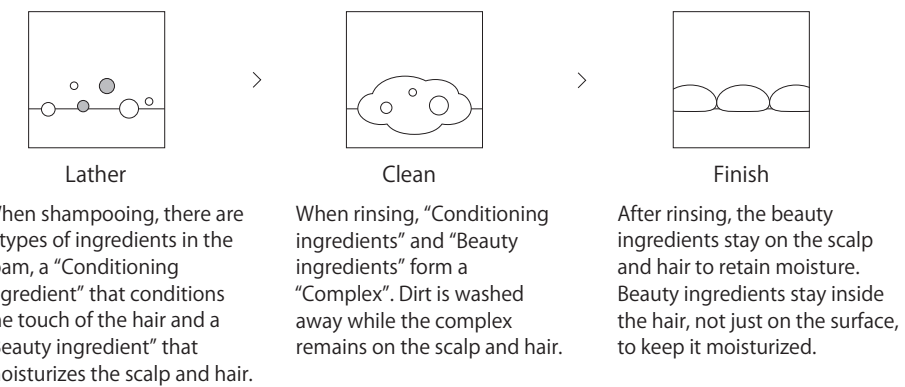
A blend centered around floral-inspired bergamot and gentle lavender to provide a soft and refreshing fragrance.



Moisture shrink formula

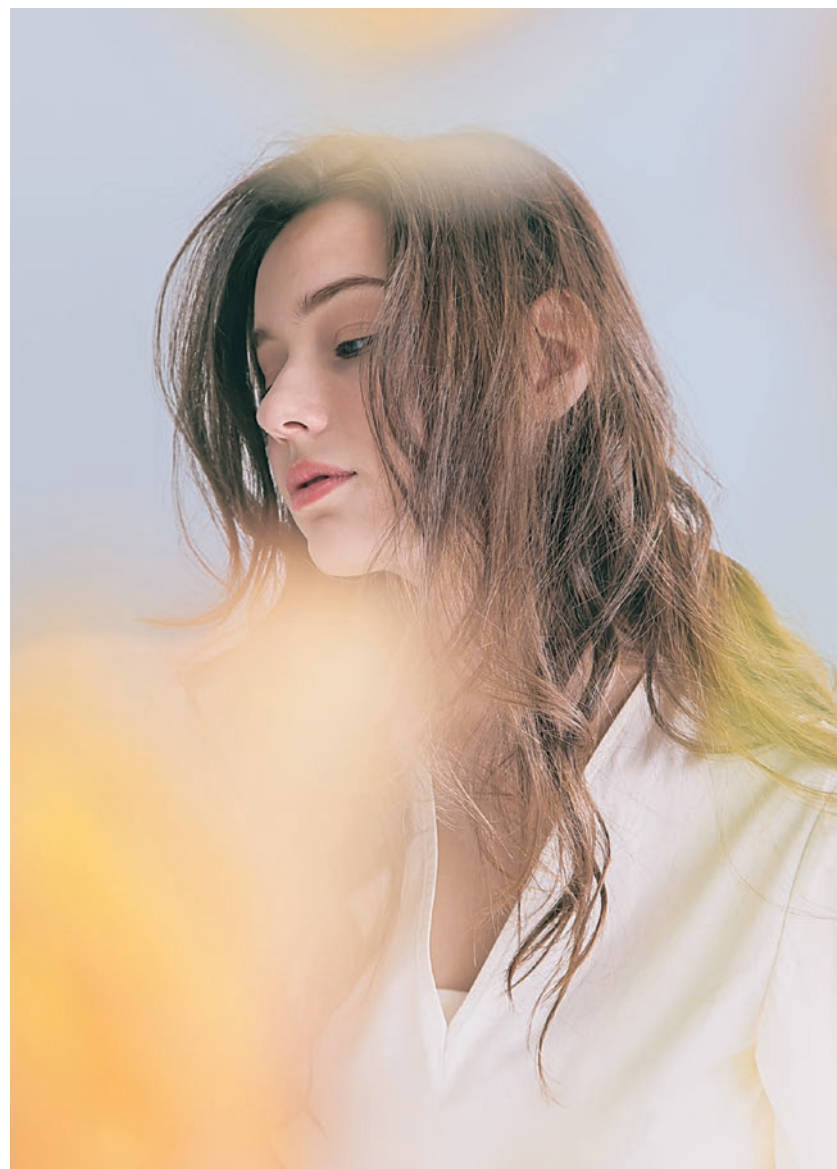
Cleans dirt, retains necessary beauty ingredients, and moisturizes hair.

ARIMINO's original moisture shrink formula retains beauty ingredients such as "Astaxanthin*1" and plant oils, while removing unnecessary dirt. Beauty ingredients stay in place and retain moisture while leaving the scalp and hair refreshed and conditioned.



PUFF SMOOTH

Scalp and Hair Mist



PUFF REFRESHING MIST

120mL

This mist helps to increase volume at the top and achieve styling that rises up softly from the roots. Just apply a quick spray to dry hair. The product contains "Astaxanthin*" a beauty ingredient that helps to keep the scalp and hair moisturized. Creates a soft, voluminous finish from the roots. It is also recommended for creating a base for giving short hair and perms some movement.



Features of fragrance

Lavender and chamomile based fragrance

A blend centered around soft, soothing lavender and sweet, gentle chamomile to envelop you with a soft fragrance.






For these concerns

- ☐ Lack of volume at the top of the head
- ☐ I want to add movement and volume to the hair ends
- ☐ I want to finish with bounce and elasticity
- ☐ I want an airy and fluffy style
- ☐ I want to make my bangs stand up softly
- ☐ I am concerned about dry scap

HOW TO USE

for SCALP & HAIR

- 1  Towel-dry hair, like gently massaging, to wipe away moisture at the roots.
- 2  Spray a suitable amount onto the scalp in the areas you want to add volume.
- 3  Use a hair dryer against the hair's flow, softly lifting up the hair as you dry.

POINT

- 1 Divide the hair into several parts and spray the mist onto the parts so it is applied directly to the scalp. This will make it easier to smooth into the hair.
- 2 For those who want more volume, spray onto the top, side of head and the bangs. For short hair, apply evenly across the whole head and smooth into the scalp with your fingers.

Recommended quantity (For medium)
2 pushes / 1 part × 4~5 parts (Whole head 8~10 pushes)

GENTLE MOIST

Hair and Body Oil



GENTLE NUANCE OIL

120mL

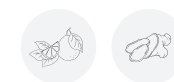
This oil can be used for flexible styling depending on the amount used. Easily create tight buns or moisturized, supple, curly hair. It provides a perfect balance of smooth and light feeling and soft and moist feeling. This light oil spreads smoothly and is recommended for body care in the fall and winter.



Features of fragrance

Bergamot and ginger based fragrance

The refreshingly sweet bergamot and spicy ginger are the core of this refreshing and dignified fragrance.






For these concerns




- | | |
|--|--|
| <input type="checkbox"/> I want to moisturize but do not want it to feel too heavy | <input type="checkbox"/> I want perms and layered styles to flow nicely |
| <input type="checkbox"/> I want to keep my hair from spreading and to make it smoother | <input type="checkbox"/> I want to style my hair naturally without using any hair products |
| <input type="checkbox"/> Sticky oils are difficult for styling | <input type="checkbox"/> I am concerned about the dryness of my body |

HOW TO USE

for HAIR

- 1  Dry your hair well with a hair dryer.
- 2  Spread an appropriate amount of the product in the palms.
- 3  Apply by running your fingers through your hair starting from the hair ends and layering on areas that are particularly dry.

for BODY

- 1  Spread an appropriate amount of the product in the palms, and then apply to the skin.
- 2  Apply in layers to areas that are particularly dry.
- 3  Finally, wrap the skin with the palms to spread it around.

POINT

- 1 Do this several times with a single pump applied each time to spread the oil evenly through the hair.
- 2 For curled hair, it is recommended that you apply the oil after curling your hair with a curling iron.

Recommended quantity

Short 1 ~ 2 pushes / Medium 3 ~ 4 pushes / Long 4 ~ 5 pushes

SALON CARE



Salon care that provides a comfortable experience
while taking care of scalp and hair troubles

Total salon-level care with SPRINAGE, which contains naturally derived "Skin and hair ingredients".
Choose from 3 menus for a deeply relaxing time while delivering luxurious moisture to the scalp and hair.
A moment to unwind will lead you to further beauty.

We offer salon care menu with SPRINAGE based on the concept of skin care

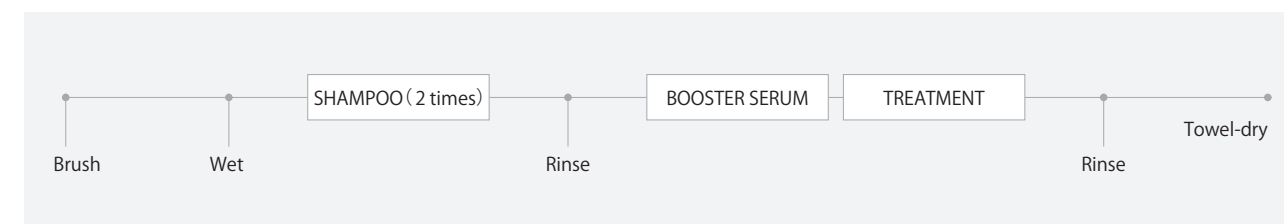
3 types of salon care

MENU 1 Quick menu

This menu allows you to moisturize the hair by firmly delivering beauty ingredients in a short period of time. Recommended for those who want to feel the beautiful finish of their hair with easy care.



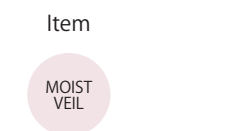
5 min



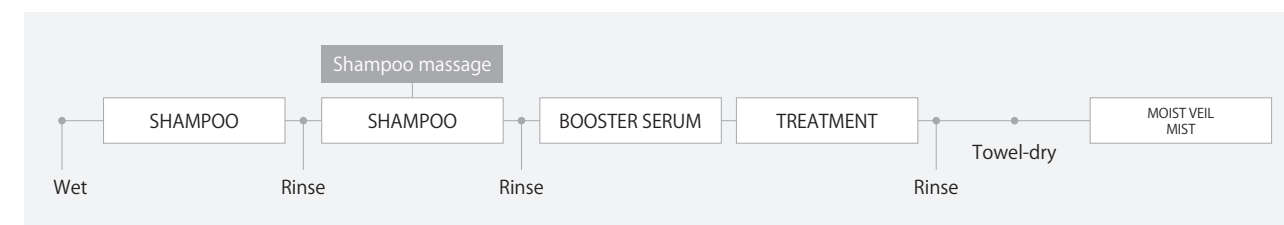
Standard treatment time : Regular shampoo time + 5 min

MENU 2 "Storing moisture in skin and hair" menu

Moisturizes and conditions sensitive and unstable scalps.
Recommended for those with scalp troubles and for scalp care after hair coloring.



7 min



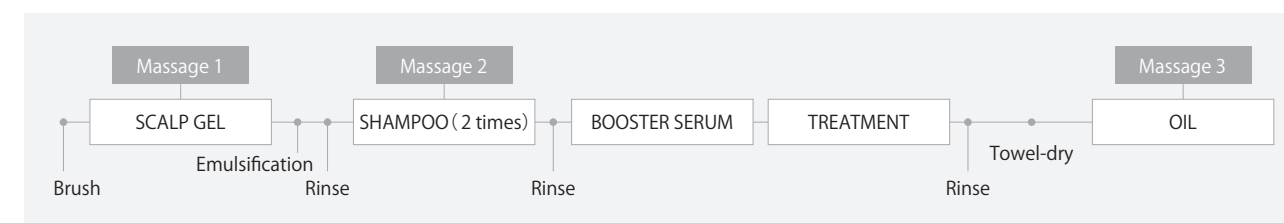
※For hair coloring, use BOOSTER SERUM before and after shampooing.
Standard treatment time : Regular shampoo time + 7 min

MENU 3 Relaxation menu for skin and hair

This menu includes a massage that recharges the scalp and hair with luxurious moisture. Recommended for those who wish to relax.



10 min



Standard treatment time : Regular shampoo time + 10 min

SALON CARE MENU



SALON CARE MENU

4 STEPS

STEP 1 ●

SCALP GEL

140 g

Moisturizes the scalp for lush, soft moisture

The lush gel provides moisture to the scalp while protecting against both oily clinging and dryness. Apply an appropriate amount to the scalp before shampooing, gently massage, and rinse.



STEP 2 ●

SHAMPOO

STEP 3 ●

BOOSTER SERUM

680 g / 1000 g

Treatment absorption support

A beauty essence which repairs and maintains the hair from the inside for springy, strong, and glossy hair. As it enhances the absorption and permeation of subsequent items, it exhibits a booster effect when used before treatment, and prolongs moisture and smoothness.



STEP 4 ●

TREATMENT

Take-home Treatment

Once a week, in place of your usual treatment.
A special care product to enjoy a salon-like finish at home.



TREATMENT PUFF SMOOTH α
36 g (For 4 times)

Soft

Thin

Fine



TREATMENT GENTLE MOIST α
36 g (For 4 times)

Coarse

Hairiness

Dry

LINE UP



Home Care Item and Salon Care Item

HOME CARE

NEW

SHAMPOO
MOIST VEIL
280mL

NEW

TREATMENT
MOIST VEIL
230 g

NEW

SHAMPOO
MOIST VEIL
680mL
※Refill 1000mL

NEW

TREATMENT
MOIST VEIL
680 g
※Refill 1000 g

NEW

MOIST VEIL
MIST
120mL

NEW

MOIST VEIL
BALM
25 g

SHAMPOO
PUFF SMOOTH
280mL

TREATMENT
PUFF SMOOTH
230 g

SHAMPOO
PUFF SMOOTH
680mL
※Refill 1000mL

TREATMENT
PUFF SMOOTH
680 g
※Refill 1000 g

PUFF REFRESHING
MIST
120mL

SHAMPOO
GENTLE MOIST
280mL

TREATMENT
GENTLE MOIST
230 g

SHAMPOO
GENTLE MOIST
680mL
※Refill 1000mL

TREATMENT
GENTLE MOIST
680 g
※Refill 1000 g

GENTLE NUANCE
OIL
120mL

SPA SOOTHING OIL
40mL

SERUM SPA OIL
40mL

SALON CARE

SCALP GEL
140 g

BOOSTER SERUM
680 g
※Refill 1000 g

TREATMENT
PUFF SMOOTH α
36 g × 9

TREATMENT
GENTLE MOIST α
36 g × 9

